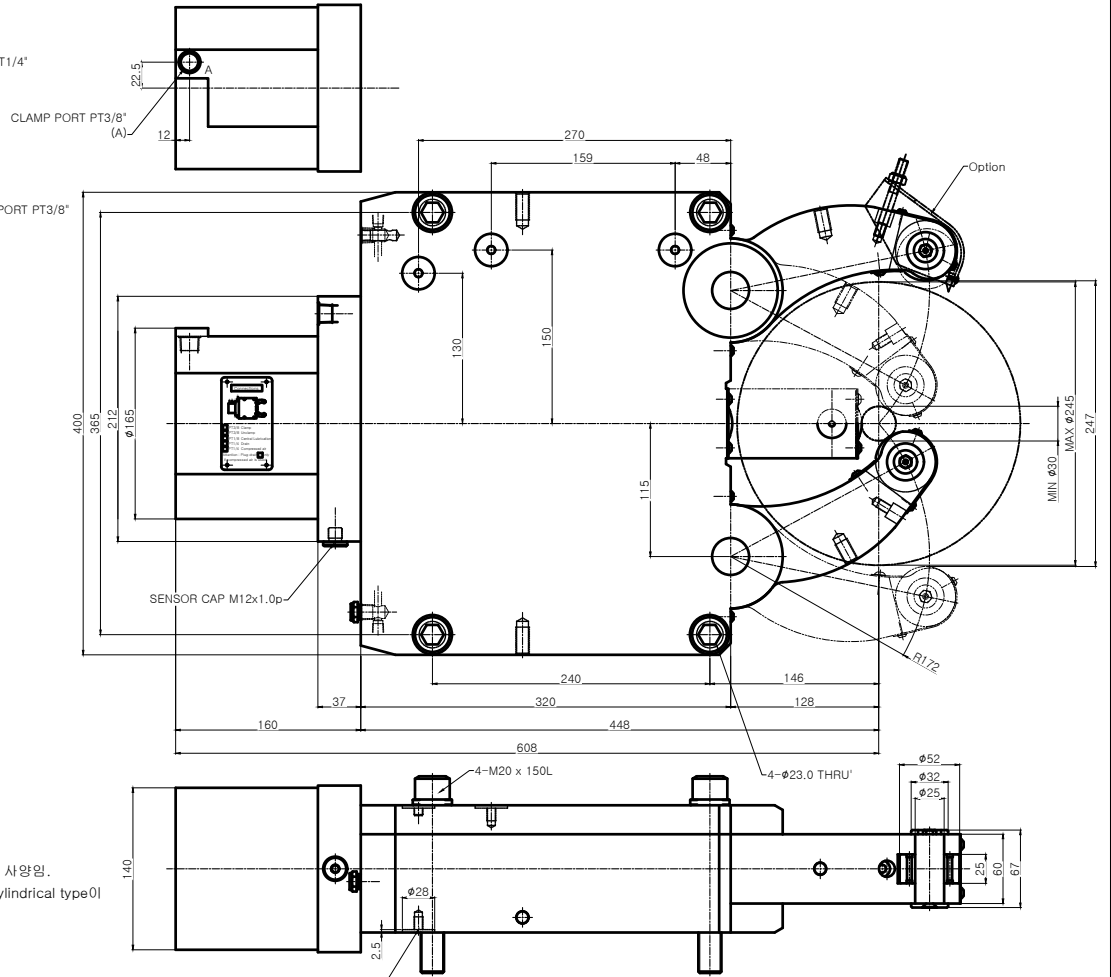
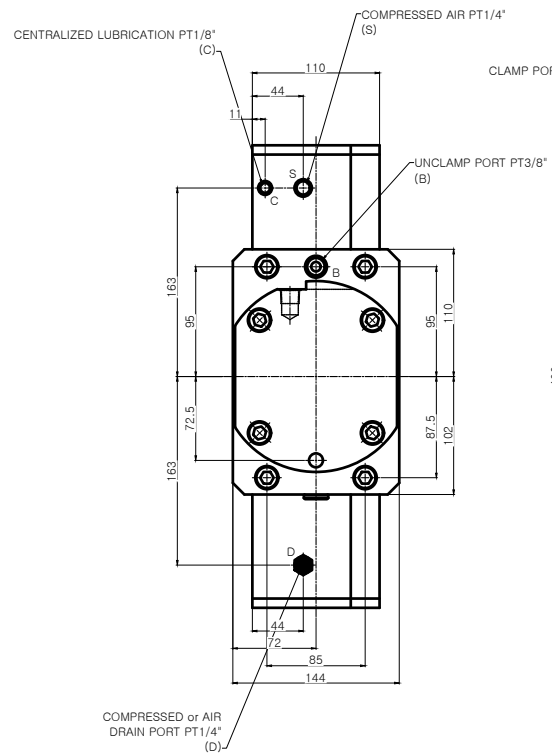


A0x1.2



NOTE
 1. Proximity Sensor는 Option 사양임.
 2. Arm에 조립되는 Roller는 cylindrical type이 기본 사양임.

SPECIFICATION	
CENTERING RANGE	φ35-φ245 mm
PISTON AREA	78 mm ²
OPERATING PRUSSURE	8-60 kgf/cm ²
MAX CLAMPING FORCE/ROLLER	1500 kgf
CENTERING ACCURACY WITHIN THE WHOLE RANGE	0.05 mm
REPEATABILITY ACCURACY	0.007 mm
MAX.ROLLER SURFACE SPEED	715 m/min
MASS APPROX	92 kg

* Option of central oil lubrication
 - Oil : ISO VG68
 - For heavy working conditions and high build up of swarf
 - Lubrication intervals 2 ~ 5 min
 - Operating pressure Min.10 bar, Max.40 bar
 - The use of our separate complete lubrication unit with timer control is recommended

APPLICATION WORK	-	01	ASS'Y	STD	STA-4	1SET	-
MACHINE SPEC	-	NO.	TITLE OF ITEM	MATERIAL	SIZE & SPEC	QTY	NOTE
OPERATION	-	TITLE		STEADY REST (STA-4)	PART NAME	ASSEMBLY DRAWING	
ACCURACY	CUTTING CONDITION	DWG. NO.	STA-4		AGENCY		
ROUGHNESS	T.I.R. SURF. FINISH (N)	CODE NO.			USER		
PARALLELISM	T.I.R. DEPTH OF CUT (f)				DATE		
SQUARENESS	T.I.R. FEED (f)						
FLATNESS	T.I.R. PERFORMING PRESSURE (kg/cm ²)						
CYLINDRICITY	T.I.R. MATERIAL	SCALE					
	T.I.R. HARDNESS	1:1	Approved	Checked	Designed	SAMOULLY	