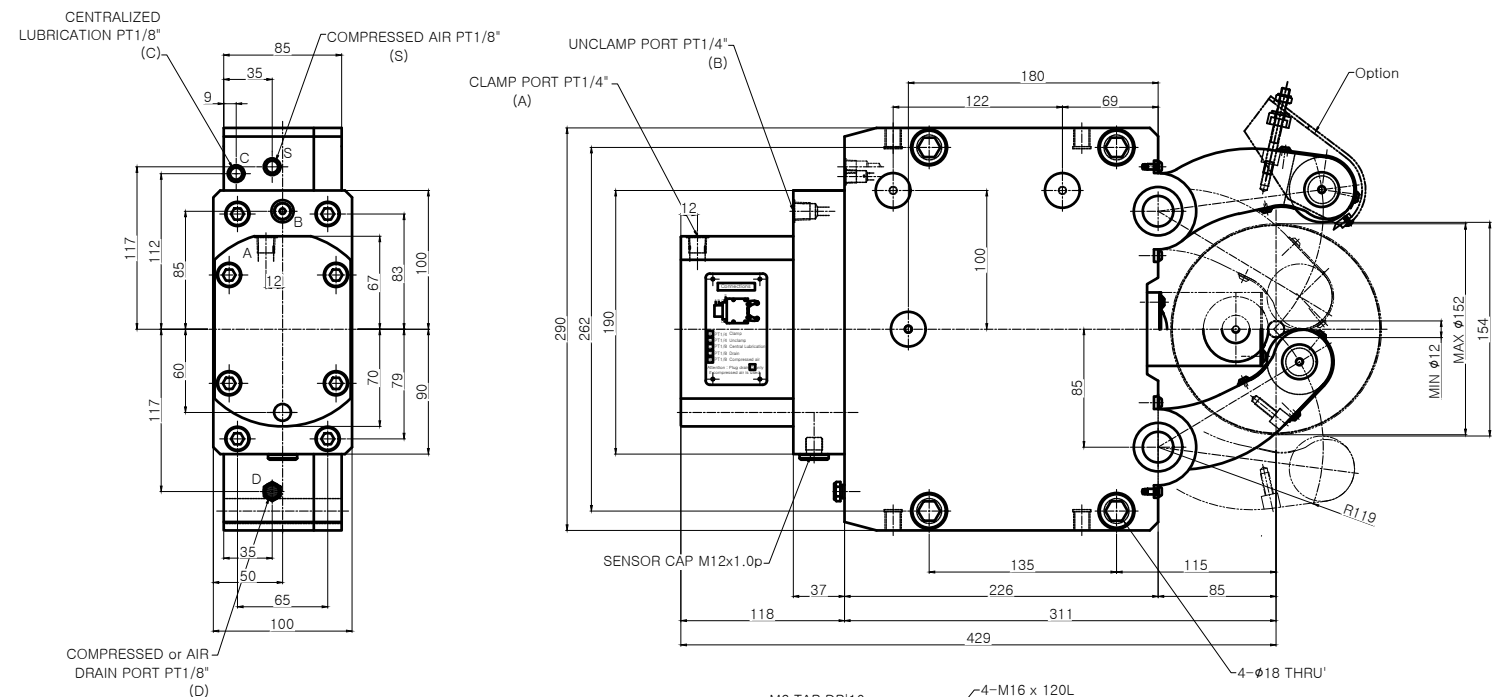


A0



NOTE
 1. Proximity Sensor는 Option 사양임.
 2. Arm에 조립되는 Roller는 cylindrical type이 기본 사양임.

SPECIFICATION	
CENTERING RANGE	φ12~φ152 mm
PISTON AREA	50cm ²
OPERATING PRUSSURE	8~60 kgf/cm ²
MAX.CLAMPING FORCE/ROLLER	1000 kgf
CENTERING ACCURACY WITHIN THE WHOLE RANGE	0.04 mm
REPEATABILITY ACCURACY	0.007 mm
MAX.ROLLER SURFACE SPEED	725 m/min
MASS APPROX	38 kg

* Option of central oil lubrication
 - Oil : ISO VG68
 - For heavy working conditions and high build up of swarf
 - Lubrication intervals 2 ~ 5 min
 - Operating pressure Min.10 bar, Max.40 bar
 - The use of our separate complete lubrication unit with timer control is recommended

APPLICATION WORK	NO.	ASS'Y	STD	STA-3	1SET	-
MACHINE SPEC.	-	-	-	-	-	-
OPERATION	-	-	-	-	-	-
ACCURACY		CUTTING CONDITION		DWG. NO.	STA-3	AGENCY
SURF.ROUGH (Ra)	T.I.R. SURF.ROUGH (N)	T.I.R. DEPTH OF CUT (f)	T.I.R. FEED (f)	CODE NO.	-	USER
PARALLELISM (//)	T.I.R. DEPTH OF CUT (f)	T.I.R. FEED (f)	T.I.R. DEPTH OF CUT (f)	DATE	-	-
SQUARENESS (⊥)	T.I.R. DEPTH OF CUT (f)	T.I.R. FEED (f)	T.I.R. DEPTH OF CUT (f)	SCALE	1:1	-
FLATNESS (—)	T.I.R. DEPTH OF CUT (f)	T.I.R. FEED (f)	T.I.R. DEPTH OF CUT (f)	APPROVED	Checked	Designed
CYLINDRICITY (⊘)	T.I.R. DEPTH OF CUT (f)	T.I.R. FEED (f)	T.I.R. DEPTH OF CUT (f)	SAMBULLY		