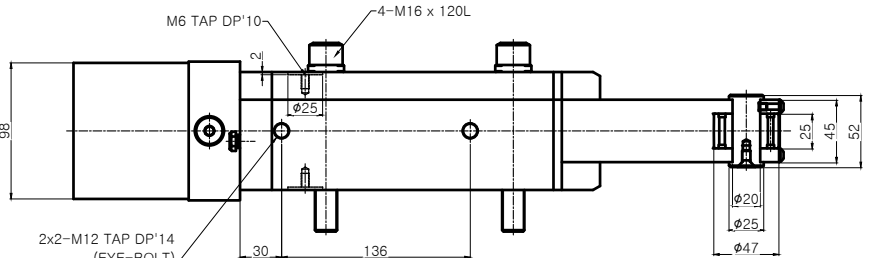
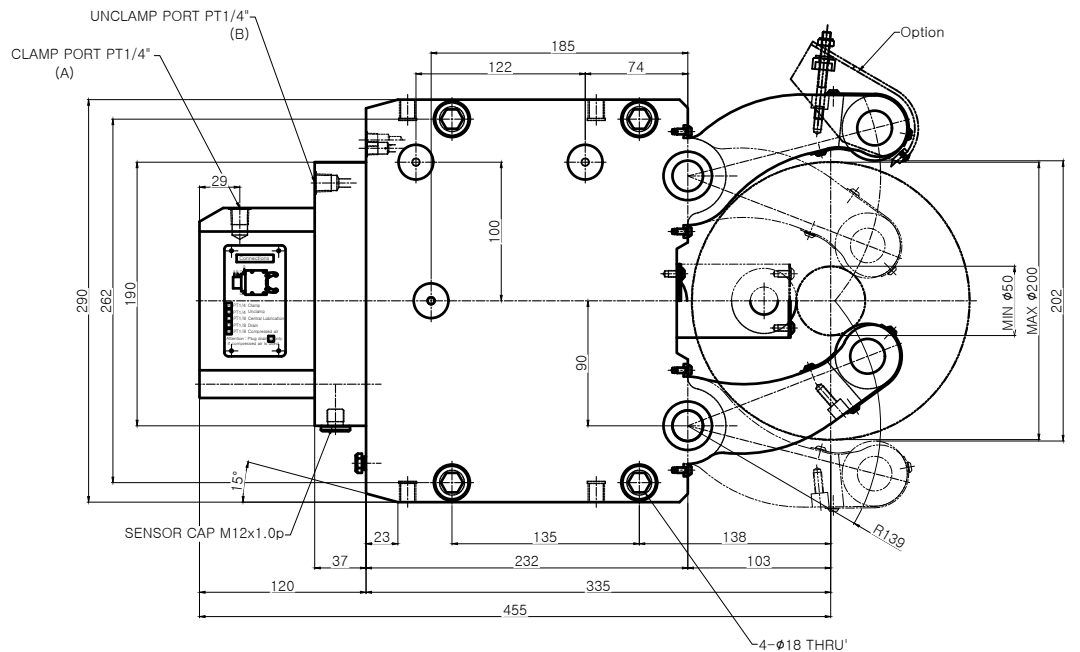
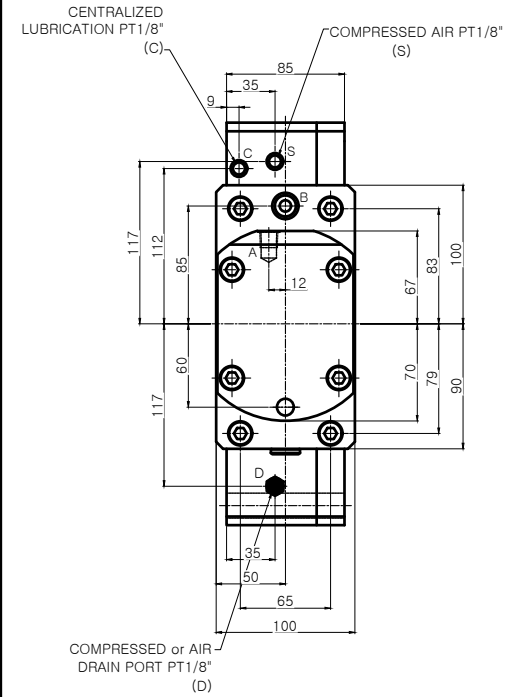


A0



**NOTE**  
 1. Proximity Sensor는 Option 사양임.  
 2. Arm에 조립되는 Roller는 cylindrical type이 기본 사양임.

| SPECIFICATION                             |                          |
|---|--------------------------|
| CENTERING RANGE                           | φ50~φ200 mm              |
| PISTON AREA                               | 50cm <sup>2</sup>        |
| OPERATING PRUSSURE                        | 8~60 kgf/cm <sup>2</sup> |
| MAX.CLAMPING FORCE/ROLLER                 | 1000 kgf                 |
| CENTERING ACCURACY WITHIN THE WHOLE RANGE | 0.04 mm                  |
| REPEATABILITY ACCURACY                    | 0.007 mm                 |
| MAX.ROLLER SURFACE SPEED                  | 725 m/min                |
| MASS APPROX                               | 43 kg                    |

\* Option of central oil lubrication  
 - Oil : ISO VG68  
 - For heavy working conditions and high build up of swarf  
 - Lubrication intervals 2 ~ 5 min  
 - Operating pressure Min.10 bar, Max.40 bar  
 - The use of our separate complete lubrication unit with timer control is recommended

| APPLICATION WORK | NO.                     | ASS'Y                   | STD   | STA-3.2  | 1SET    |          |
|------------------|-------------------------|-------------------------|-------|----------|---------|----------|
| MACHINE SPEC     |                         |                         |       |          |         |          |
| OPERATION        |                         |                         |       |          |         |          |
| ACCURACY         |                         | CUTTING CONDITION       |       | AWG NO.  | STA-3.2 | AGENCY   |
| ROUNDNESS        | T.I.R. PARALLELISM (μ)  | T.I.R. DEPTH OF CUT (t) | m/min | CODE NO. |         | USER     |
| PARALLELISM      | T.I.R. FEED (f)         | m/rev                   |       |          |         | DATE     |
| SQUARENESS       | T.I.R. DEPTH OF CUT (t) | kg/mm <sup>2</sup>      |       |          |         |          |
| FLATNESS         | T.I.R. MATERIAL         |                         |       |          |         |          |
| CYLINDRICITY     | T.I.R. HARDNESS         |                         |       |          |         |          |
| SCALE            |                         | 1:1                     |       | Approved | Checked | Designed |

