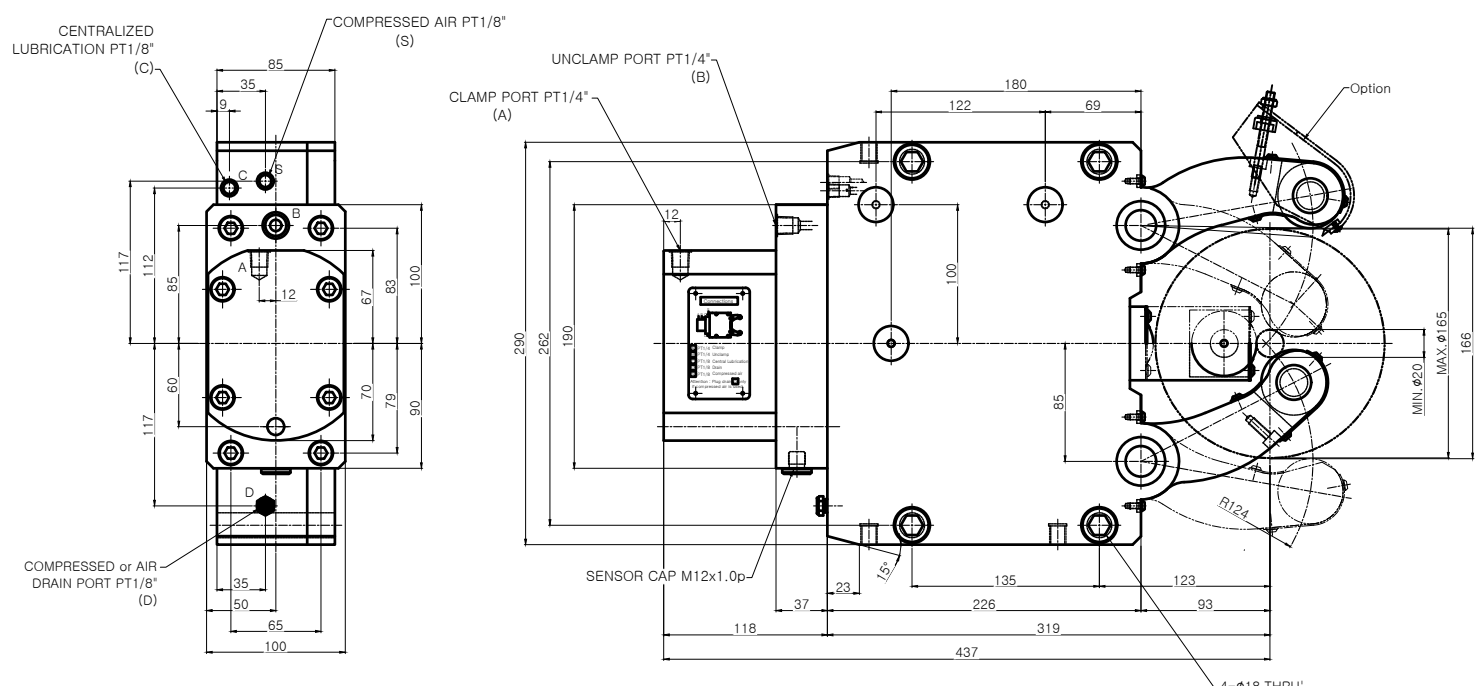


A0



NOTE
 1. Proximity Sensor는 Option 사양임.
 2. Arm에 조립되는 Roller는 cylindrical type이 기본 사양임.

SPECIFICATION	
CENTERING RANGE	φ20~φ165 mm
PISTON AREA	50cm ²
OPERATING PRUSSURE	8~60 kgf/cm ²
MAX.CLAMPING FORCE/ROLLER	1000 kgf
CENTERING ACCURACY WITHIN THE WHOLE RANGE	0.04 mm
REPEATABILITY ACCURACY	0.007 mm
MAX.ROLLER SURFACE SPEED	725 m/min
MASS APPROX	40 kg

* Option of central oil lubrication
 - Oil : ISO VG68
 - For heavy working conditions and high build up of swarf
 - Lubrication intervals 2 ~ 5 min
 - Operating pressure Min.10 bar, Max.40 bar
 - The use of our separate complete lubrication unit with timer control is recommended

APPLICATION WORK	-	01	ASS'Y	STD	STA-3.1	1SET	-
MACHINE SPEC	-	NO.	TITLE OF ITEM	MATERIAL	SIZE & SPEC	QTY	NOTE
OPERATION	-	TITLE		STEADY REST (STA-3.1)	PART NAME	ASSEMBLY DRAWING	
ACCURACY		CUTTING CONDITION		DWG. NO.	STA-3.1	AGENCY	
ROUGHNESS	T.J.R. SURFACE FINISH (N)	T.J.R. DEPTH OF CUT (I)	mm	CODE NO.	-	USER	
PARALLELISM	T.J.R. FEED (I)	m/rev				DATE	
SQUARENESS	T.J.R. SIDE OF PRESSURE (Ds)	kg/cm ²					
FLATNESS	T.J.R. MATERIAL			SCALE	1:1	SANGHVI	
CYLINDRICITY	T.J.R. HARDNESS			Approved	Checked	Designed	